

Luis Carlos Bermúdez Bustamante

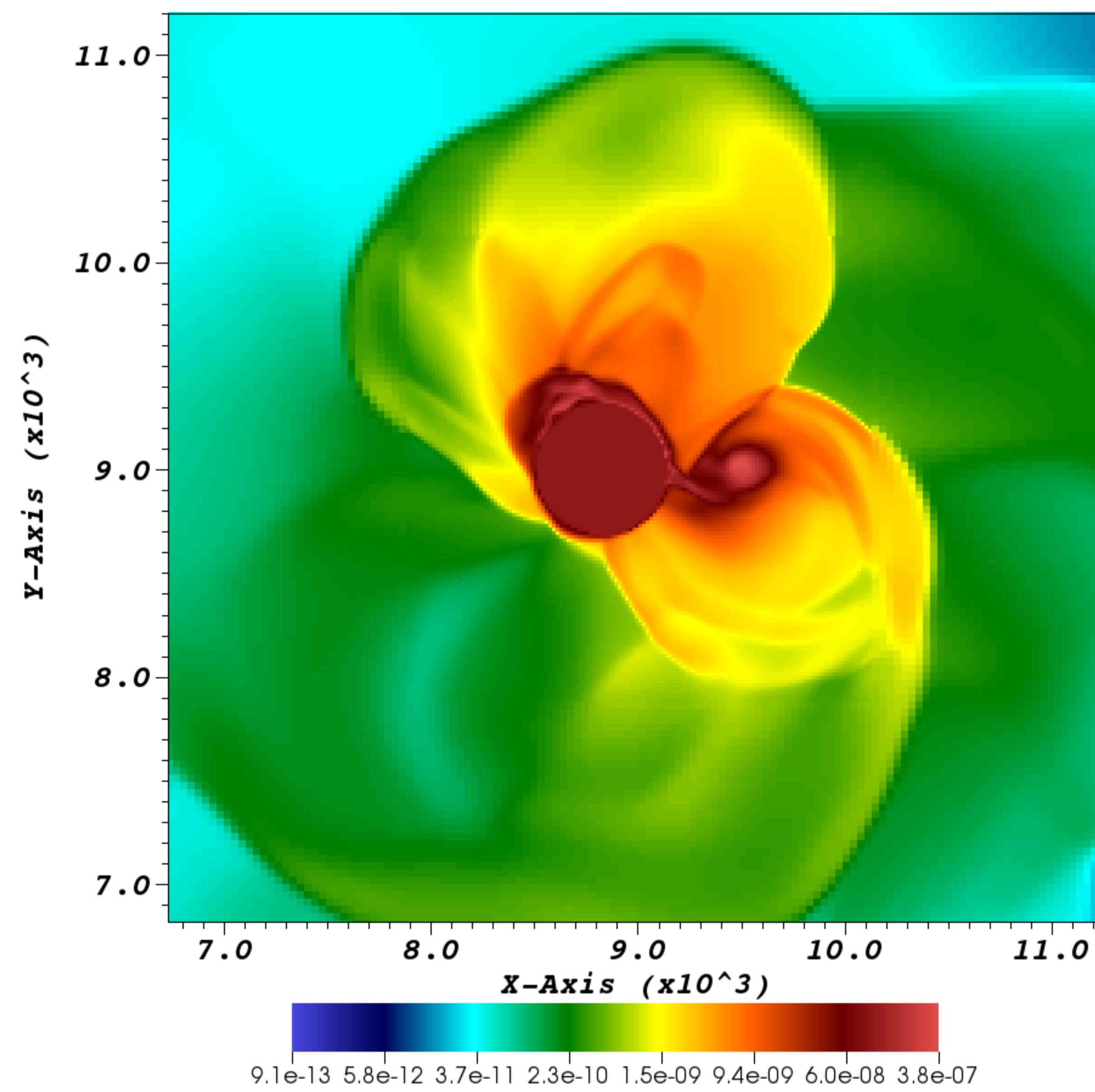
Instituto de Astronomía-UNAM, Ensenada

luisb@astro.unam.mx — +52 (646) 196 4128



Current work

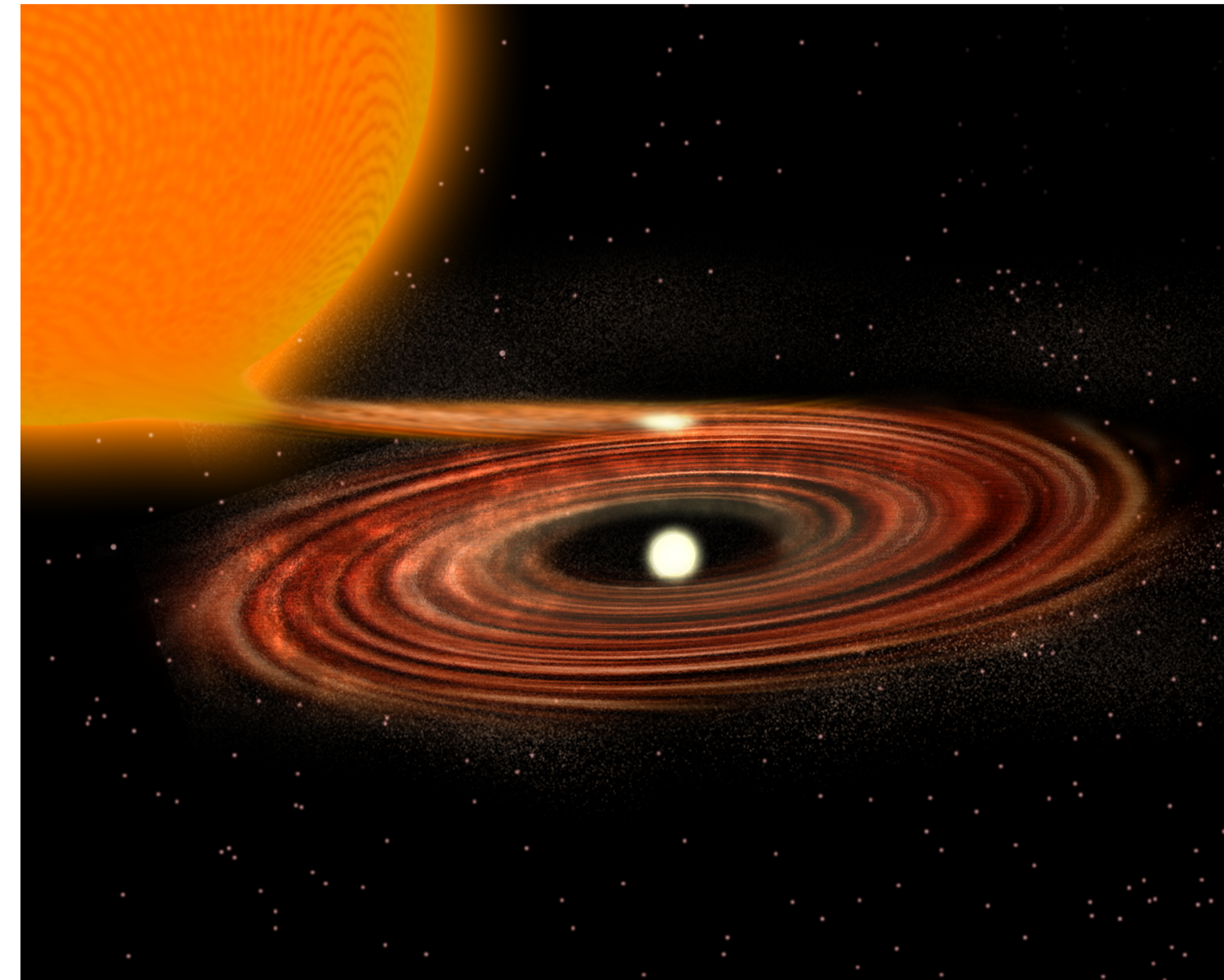
- Numerical simulations of the flow pattern in close binary stars.
- Shaping mechanisms in planetary nebulae (PNe)



Gas density (g/cm^3) in logarithmic scale at the orbital plane.

Research Interests

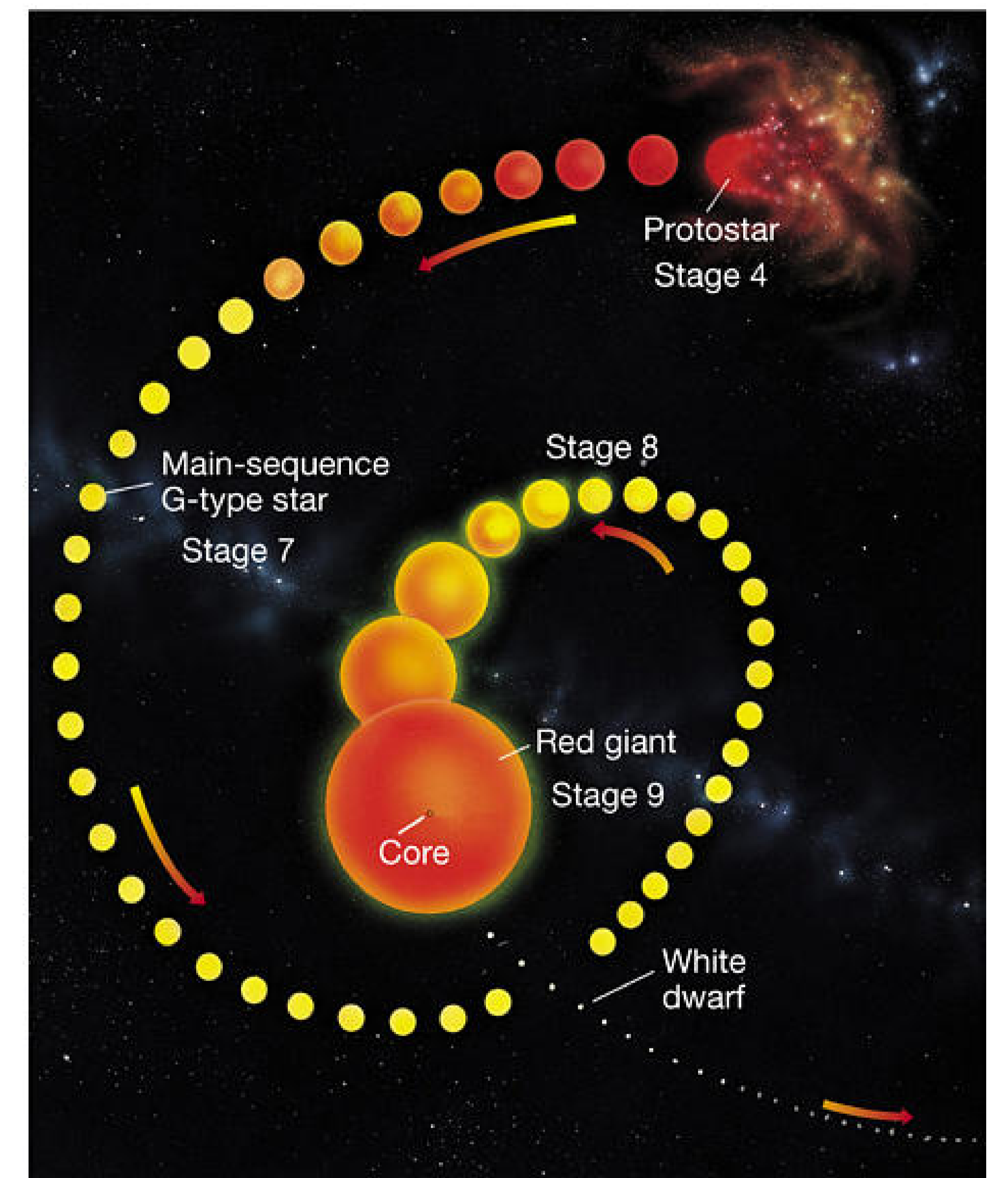
Accretion disk theory, stellar evolution, dynamics of PNe.



Credit: P. Marenfeld and NOAO/AURA/NSF



M2-9. Credit: Judy Schmidt, created using data from the Hubble Legacy Archive.



Copyright © 2005 Pearson Prentice Hall, Inc.

Current interest in CLOUDY

Applying photoionization models to PNe in the context of the interacting stellar winds model.