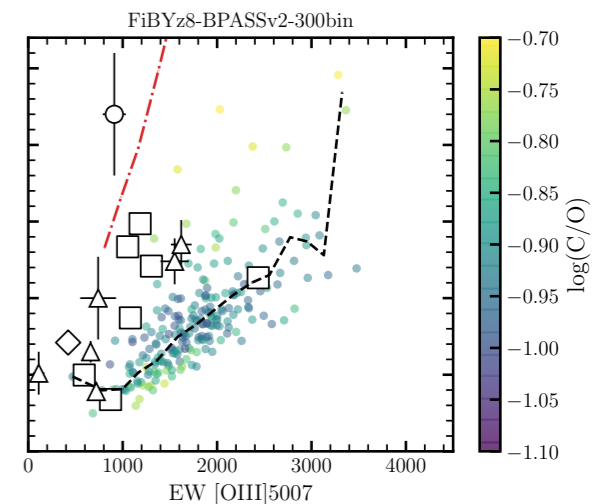
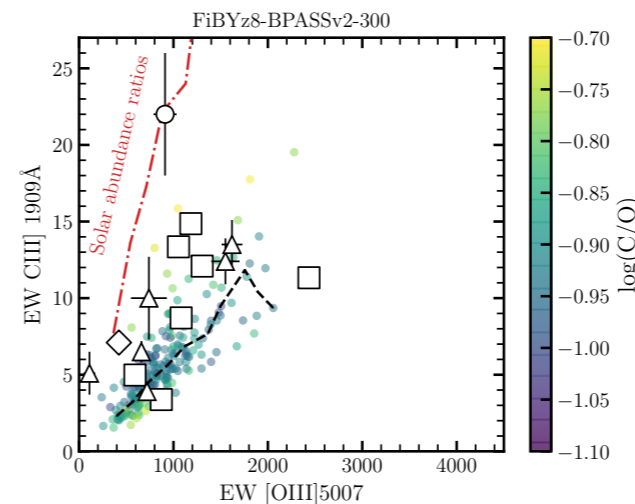
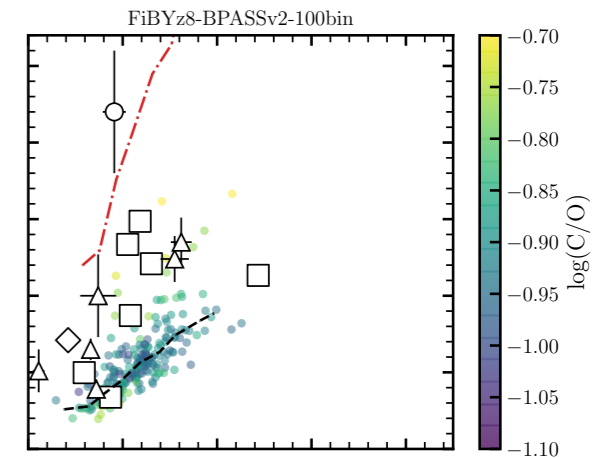
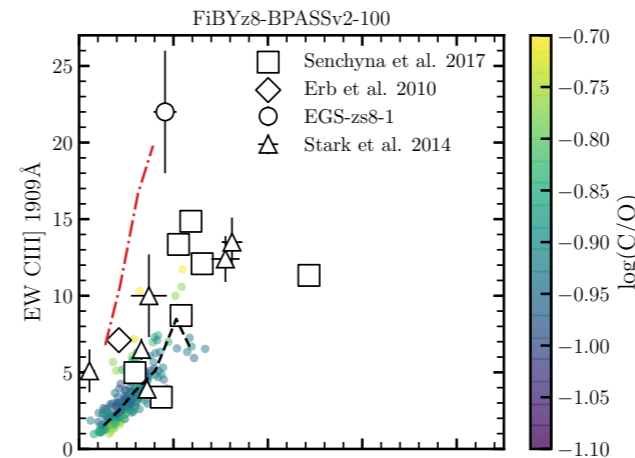
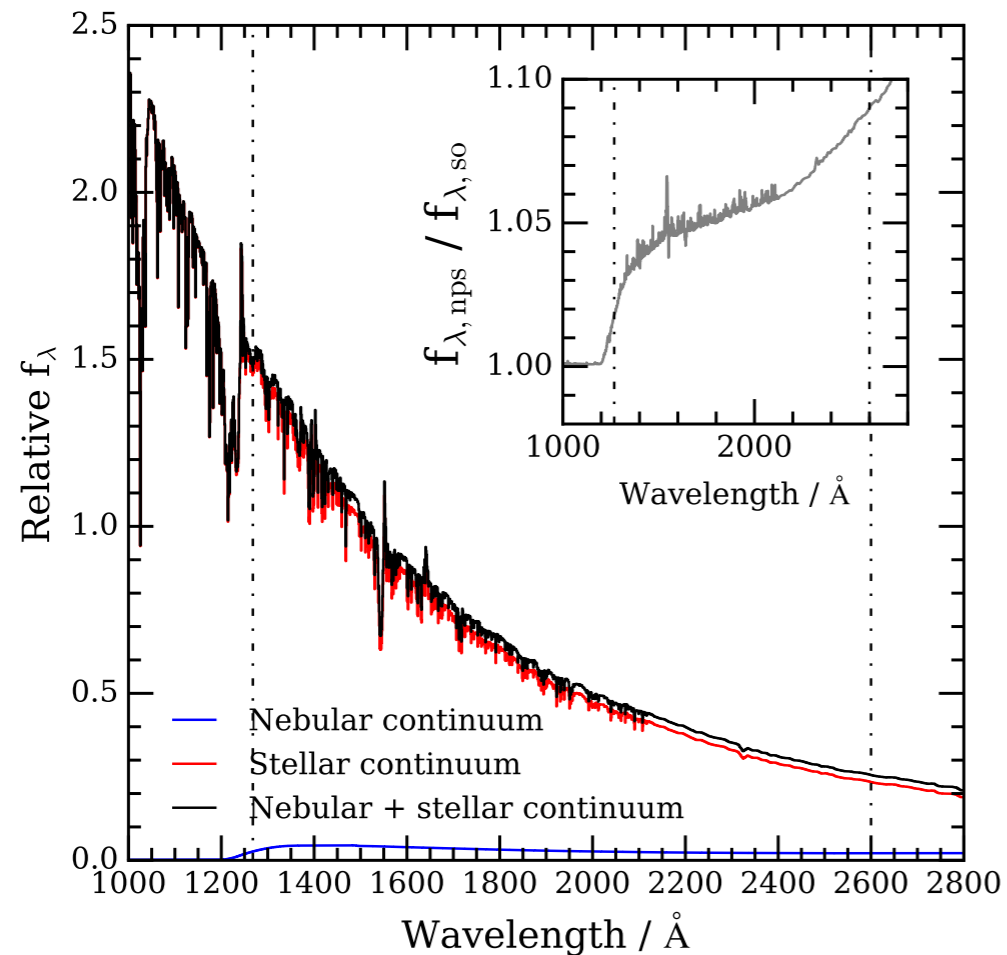


Modelling the spectra of galaxies during reionization

Fergus Cullen IfA, University of Edinburgh



- Post-process data from a simulation of galaxies during the reionization era (FiBY) to build intrinsic stellar SEDs
- Model the nebular continuum and emission lines with Cloudy, using the predicted ionizing spectra as input.
- So far just focussed on nebular continuum (arXiv: 1701.07869)

- In the future want to explore emission line ratios, equivalent widths etc.
- Predictions for / interpretation of JWST data