

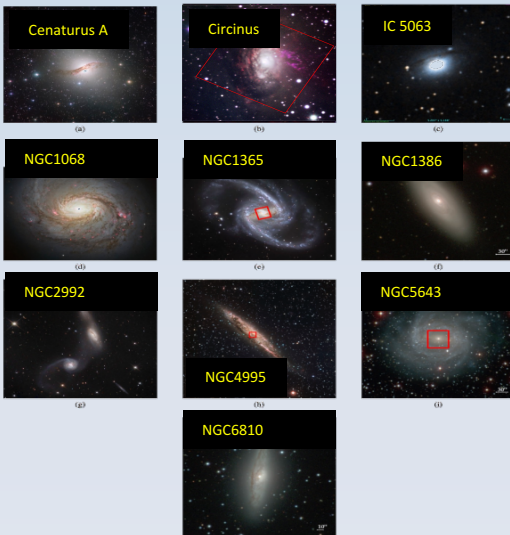
ISM gas and outflows in AGN: a detailed study of their physical properties from the **MAGNUM** survey

Matilde Mingozi

Dipartimento di Fisica e Astronomia, Bologna University – INAF, Arcetri Astrophysical Observatory - Italy

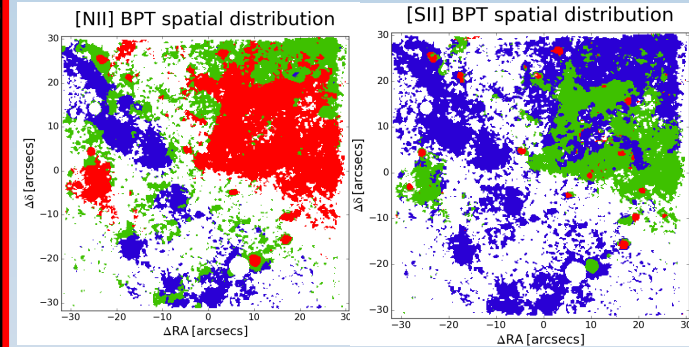
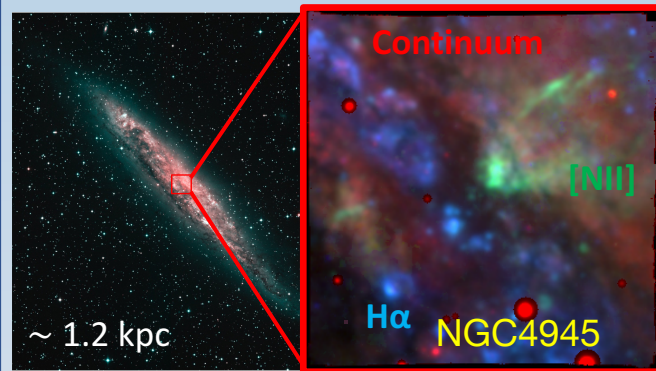
MAGNUM survey: Measuring AGN Under MUSE Microscope

- ▷ Nearby AGN: $D < 50$ Mpc
- ▷ MUSE (VLT): $1' \times 1'$, $0.2''$ sampling, $4650\text{-}9300 \text{ \AA}$ ($1500 < R < 3500$)
- ▷ So far ten objects observed (900,000 spectra!)
- ▷ Multi-wavelength data: *Chandra* – *XMM-Newton*, *Galex*, *HST*, *Spitzer*, *Herschel*, *ALMA*

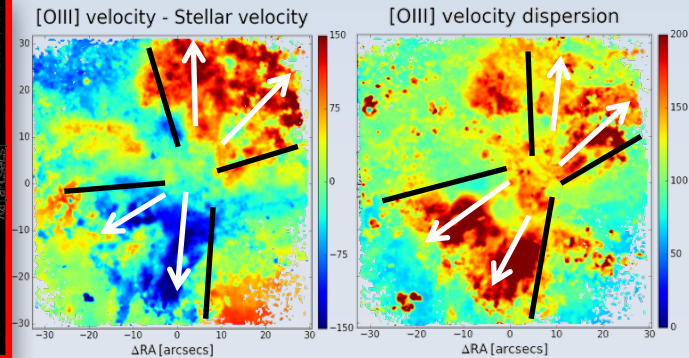
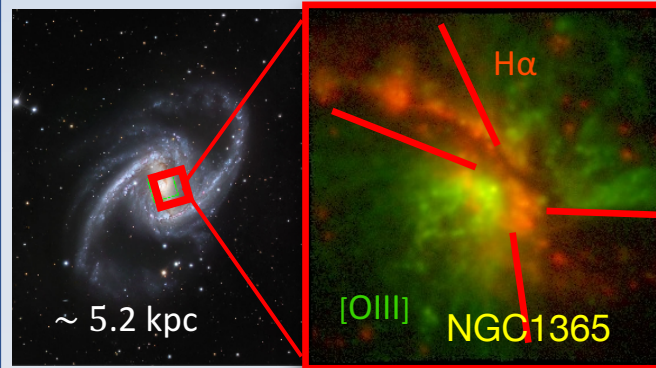


AIM: study in details SF and AGN activity, ISM conditions, outflows, kinematical and photoionization modelling etc.

NGC 4945 and NGC 1365: spatially resolved BPT diagrams and kinematics



Before MUSE data, “No manifestation of the active nucleus is found, other than in the hard X-rays” (Marconi+00)



NGC 1365 has a complex kinematics: **bi-conical outflow**
 → Evidence from the velocity and velocity dispersion maps